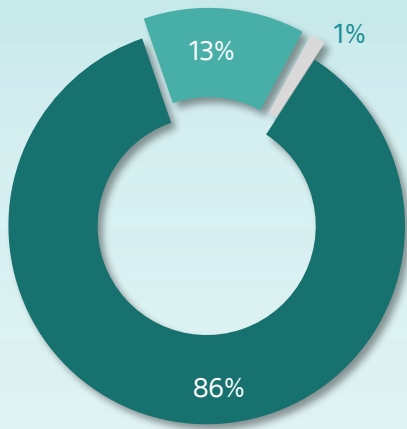
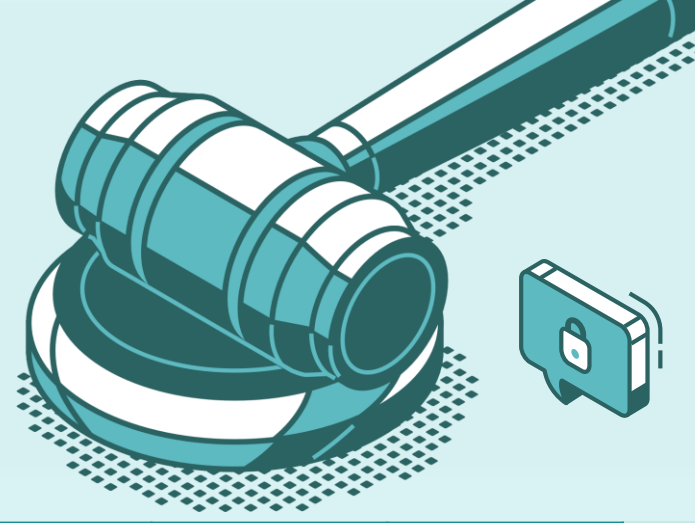


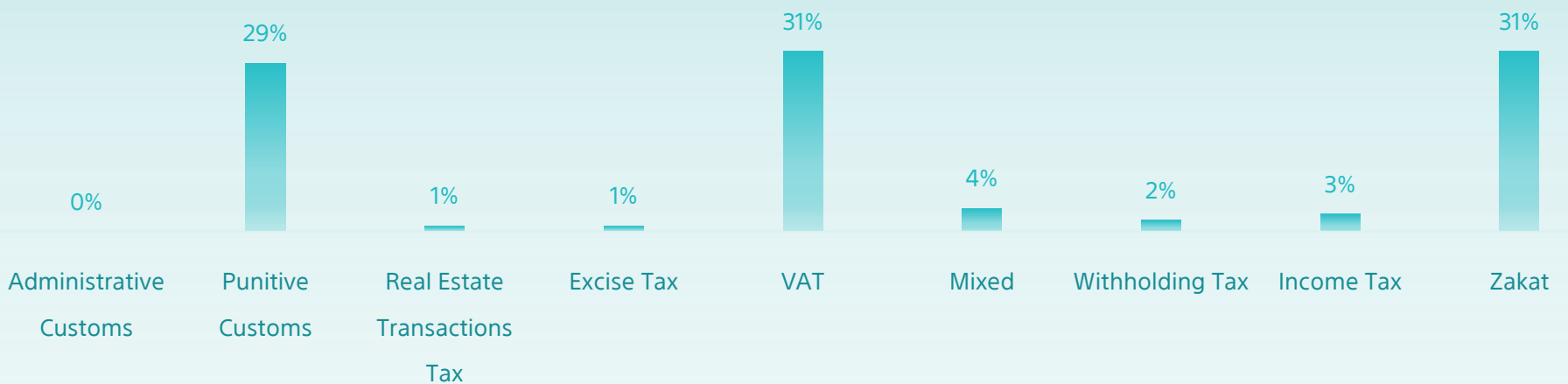
All Cases Report

Until Jan 2023



Initial Appeal Reconsider

Classification	Initial	Appeal	Reconsider	Total
Zakat	37,287	8,309	939	46,535
Income Tax	3,253	831	56	4,140
Withholding Tax	1,879	644	23	2,546
Mixed	4,454	1,162	75	5,691
VAT	39,498	6,195	681	46,374
Excise Tax	665	176	12	853
Real Estate Transactions Tax	1,085	105	12	1,202
Punitive Custom	41,357	2,516	121	43,994
Administrative Customs	332	41	15	388
Total	129,810	19,979	1,934	151,723



Top cases classification / type



Fine (VAT)
12%



Tax Assessment-
Discretion (Zakat)
15%



Tax Assessment -
Accounts (Zakat)
16%



Tax Return & Fine (VAT)
9%



Disposing of a restricted cleared merchandise
with a pledge not to dispose of.
(Customs)
19%

